

St. Mary's Sewing Group

"Sewing" is a bit of a misnomer as folks do handwork such as knitting, crochet, mending, quilting, or sometimes just chat. Each one works on their individual project. We have had ones who came to learn to knit and did a victory dance with the first square finally finished with all of its stitches in the right place. It is an informal fellowship group where folks may share

their joys and sorrows if they wish with the caring and support of the others. There is no agenda so no worries about being "tardy." The door is on the latch and folks come in, get coffee or tea, if they wish, and join the group.

We meet every Tuesday, all year around, from 10:00 a.m. until noon at Margaret Sharrow's home: 1630 Winterset Drive, call (907) 279-4190, if you would like directions. When Margaret is unavailable we meet at another's home. We try to have that information in the bulletin. We welcome others to gather with us.

Margaret Sharrow ☪

St. Mary's Sewing
Women's Group

St. Mary's Women's Book Group

The Women's Book group is almost halfway through its book reading schedule (attached for 2010-2011). We meet at the end of summer to select books from those recommended by the members and then share the facilitation of our discussions according to who has recommended the book.

Some changes we added this year: a person recommending the book should have already read it; we meet only once a month on the fourth Wednesday of the month; we left two empty spaces in our schedule in the event a wonderful book comes to our attention which can be inserted into one of the two free spaces.

Continuing as practices of the group are the following: in the event there is a fifth Wednesday in a month, we declare a movie night, which might focus on a movie currently playing in the area, or, as in most cases, on a DVD of a movie which is deemed an overlooked gem, or one that we really should see again. A

coordinator (movie fanatic) is in charge of that selection. Discussion follows the viewing and usually also involves some snacks. Also continuing as in past years, is the meeting place for book discussions—Title Wave Books on West Northern Lights. Our table is near the back on the left, as you pass the check-out counter, in the vicinity of children's books.

This year the book selections have been as eclectic as they have been in the past. Already, we have read Markus Zusak's *The Book Thief*, Laura Hillenbrand's *Unbroken*, and Emma Donoghue's *Room*, each of them a former best seller with *Unbroken* still on that list. Future selections are listed below.

The group is eager for new members and invites any interested woman to join our discussions. Personal testimonies indicate that members have come to love the group because it broadens the kind of reading that they do. Louise Freeman-Toole coordinates the logistics for the group. If you would like more information, call Connie Jones at (907) 230-8290.

Connie Jones ☪

St. Mary's Women's Book Group



St. Mary's Habitat for Humanity

St. Mary's Habitat for Humanity Work 2010-2011-2012

St. Mary's is a covenant partner in the Anchorage Habitat for Humanity Faith Relations Partnership. *What does that mean? How are we helping the deserving poor to obtain safe, affordable housing?*

We help to sponsor and help build one house for one deserving family.

Each year, Anchorage Habitat builds homes that are paid for by several sponsors. This year we built homes for eight families in a townhouse community. The Faith House is one. BP sponsored one. The 100 women group sponsored a one. Realty groups and local construction groups were sponsors. Other donors sponsored one or more. Recipient families pay mortgages and donated sweat equity.

Anchorage has a dire scarcity of affordable housing-- each home contributes to a healthier housing market and a healthier society. Habitat houses cost more than \$100,000 to build – even with Habitat's efficient, innovative, standardized designs. Even after the land is donated or subsidized. Costs are high due to Anchorage regulations that include garages; the higher cost of materials and mechanicals; and insulation not needed in some lower-48 state Habitat builds. The resale market is good and when mortgages are paid back, funding is rolled into additional housing.

2011 Anchorage Faith Relations Partnership Goals

- 2Q: Recruit volunteers from the faith community to help build the 2011 Faith House
- 1Q – 4Q: Secure at least \$70,000 in additional donations from the faith community to complete raising sponsorship funds for the 2011 Faith House.
- 1Q – 4Q: Continue to broaden the membership of this partnership with persons from congregations or faith groups not currently represented.

The Faith Relations Partnership meets the second Monday of every other month from 5:30 -6:30 pm at the Habitat Office - 500 W International Airport Rd Ste E.

Our involvement, impact and issues:

St Mary's representatives attended monthly advisory meetings; parishioners contributed through monthly calendars and a board sale. The Outreach Committee helped to meet our 2010-2011 obligations for a Faith House in each year.

The family chosen for the Faith house this year are Russian and obtained official U.S. asylum due to religious persecution – they are Muslim. Families with incomes up to \$50,000 may apply (depending on the number of children). However, families must have less than 30% debt-to-income ratios, and most Americans have more.

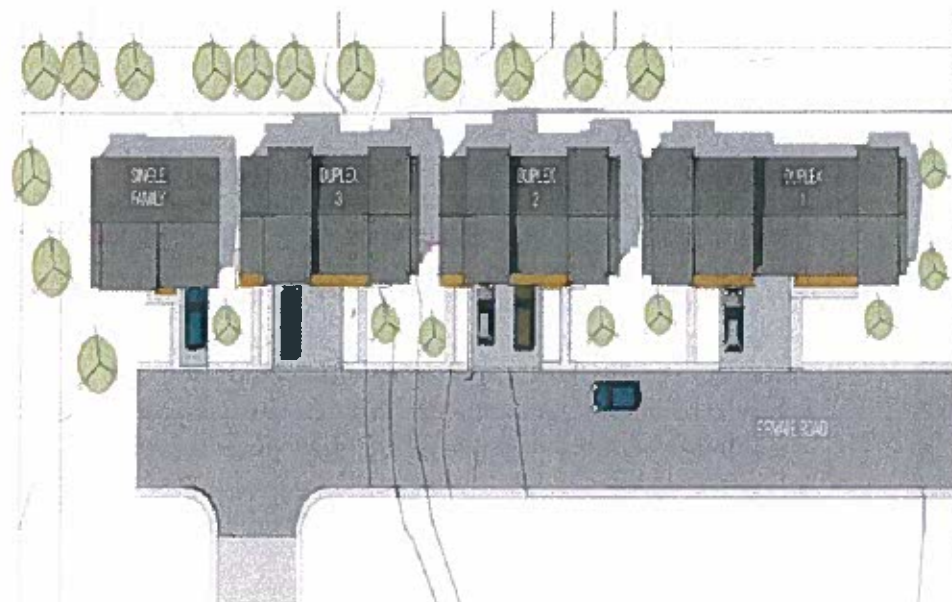
Required participation in builds was done by individuals; we initiated individual sign-up due to "lessons learned." When Phil signed up to bring teams – St. Mary's people who committed to help did not show up, endangering progress.

Ann Lovejoy is unable to do everything, and now that Phil has gone, we would appreciate help finding a construction and volunteer coordinator. Also, skilled individuals are needed: winter dry-wall installations continue in this year's units. The 2012 build adds eight more units to the development off of Oklahoma St. The faith partnership's Lutherans will build one and the other members of the faith community will build another. St Mary's contribution will be \$5000.

Our Mission Partners in Habitat for Humanity:

*Anchor Park United Methodist Church - Robbie Robinson
Anchorage Lutheran Church - Jon Benedict; Neil Hawthorne
Central Lutheran Church - Larry Graham; Dave Hillemeier; Pastor Ron Martinson
Christ Our Savior Lutheran Church - Nicholas Kittleson
First Christian Church - Pat Roth, Rev. Paul Boling
First Congregational Church - Kathy Means
First Presbyterian Church - Marcus Geist
Holy Family Cathedral - Elaine Snowden
Our Lady of Guadalupe Parish - Tisha Hudspeth; Tom Miller
St Christopher's Episcopal Church - Inez and Eric Larsen
St Elizabeth Ann Seton Parish - Pat and John Kennish
St John United Methodist Church - Jan Cawvey - HFHA Board Member – Chairperson;
Dave Wallace; Rev. Peter Perry
St Mary's Episcopal Church - Ann Lovejoy
St Patrick's Parish - Tom Morahan, Tom Bruce*

What does the housing look like? Go to Oklahoma and Fourth off of Muldoon. Go to the Habitat web site, <http://www.hfhanchorage.org/church.php> The 2011 architectural drawing is below.





9:00 Choir

Some names are descriptive, some traditional: the "9:00 Choir" is a bit of each: during fall through spring, the choir provides the music leadership for the service held at that time on Sunday mornings, except, of course, when that time gets changed or seasonal services are scheduled at different hours. And during the summer it alternates with the St. Mary's Praise Singers, singing at the unified service at 10. Even saying that our name is more commonly associated with the traditional music of the Episcopal Church-- hymn singing supported by organ and parts singing choir--isn't strictly descriptive; we do non-traditional music as well and regularly incorporate other instruments. In the end, it's just our name.

The most important goal of the choir and organist is to support worship at St. Mary's (whether held at 9 am, 10 am, 7 pm, or 11 pm) in ways that enhance the experience of worship for the congregation as well as for members of the choir. The choir prepares and leads the congregation in music selected to complement the appointed readings for the day and to deepen and enrich our common understanding and celebration of the liturgical seasons.

The 9:00 Choir is a healthy organization. It has a solid core of long time members, essential for a small choir that requires a hefty commitment of time for rehearsing and leading worship. Every member is called upon to function as a leader at one point or another. At the same time, those members from time to time need to be free to meet other obligations in their lives--whether it be travel, recovery from illness, or family responsibilities. It is thus also incumbent upon the director and group to create a viable, high quality, and attractive musical organization that will attract and hold new voices and enthusiasm, allowing for meeting the needs of individuals within the group.

Essential to the health of any musical group is the ongoing infusion of new members. The

9:00 choir welcomes new members throughout the year, and we were blessed this year with several strong new members in the last year. The real growth of new members injects much appreciated vitality into the group, especially when we have said farewell to others who moved on or away. Times of transition are always stressful, to the group left behind as well as to individuals leaving. A healthy organization continues to encourage and develop leadership from within its circles and to prize resilience.

Choir members this year have included sopranos Tay Thomas, Jean Saunders, Christina Talbott-Clark (currently on maternity "sabbatical"), Gayle Nauska, Jan Sherrill, and very welcome new member, Nancy Guiley, who has already stepped in to conduct capably on several occasions. Altos Caroline Mitchell, Gina Gribbin, Karol Libby, Nancy Burke, Meghan Cummings, Elizabeth Hilpert, and Deanna Schultz fill out the rest of the front row and spill into the second row. Deanna is a fine organist and plays regularly when I am away. Basses include our section leader, Justin Birchell, Lowell Thomas, Don Endres, and Niel Thomas, with seasonal help from Richard Newman. We are blessed with three fine tenors, Joel Bolger and Bob Sherrill, led by excellent veteran Tim Fosket. Other singers, as well as by instrumentalists and other artists, offer their talents throughout the year--flutist Laura Koenig; her daughters Naomi (drums) and Madeline (cello) Endres; Skookums Sonnenschein on the harp; liturgical dancers organized by Teddy Arnold. Caroline Mitchell continues to serve as librarian, assistant director and occasional organist.

Notable this year was an end-of-summer choir retreat at Karol and Bob Libbey's wonderful and intimate lodge near Denali National Park. Thirteen choir members and spouses picked blueberries, shared meals, rode horses, rehearsed, *a capella*, new music for the year ahead smack dab in middle of one of the world's most glorious geographical areas, and got to know each other that much better.

Our Irish built Kenneth Jones organ, is 25 years old this year. To celebrate this milestone, we are looking into a "Silver Anniversary" concert in the spring. The organ continues to be a unique and important asset to worship at St. Mary's. Visitors to morning services often stop by to comment on the instrument. We still owe several thousand dollars on a loan for this instrument; contributions are welcome at any time.

A quality music program is not inexpensive. The organist is paid, the instruments (organ and pianos) require annual tuning. While there is a budget for purchasing new choir music, individual members of the group often buy their own copies or purchase a supply of a particular piece for the entire group. We have been able to stabilize the tenor and bass sections by paying a modest stipend to our professional soloists. This money has not come from the regular budget, but from spe-

cial gifts solicited from amongst ourselves to the "9:00 Choir Fund", recognizing that the vitality and sustainability of the choir requires additional support at this time. The community music group "Saltarello" performed a concert of renaissance and baroque music at St. Mary's in September, and over \$500 of the proceeds went to support the 9:00 music program. Contributions are welcome.

The choir rehearses on Thursday nights from 7 until 8:30 and at 8 a.m. on Sunday mornings. We enjoy the fellowship of working on new and familiar music, getting to know each other, seasonal social events at one another's homes, and we really enjoy making music together, for the glory of God.

Marilyn Barry
Director of Music and Organist



St. Mary's Music

Praise Singers

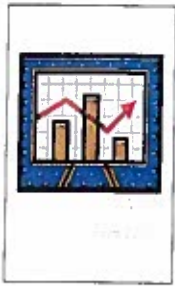
The Praise Singers are the folk and contemporary music choir at St. Mary's, singing at the 11:30 service. The group has been singing together in a guitar-based music format since 1990, and there are several members who have been in the group from the start. But new members are welcomed with open arms, and anyone with musical contributions to make is welcomed. This keeps the music fresh for the congregation and choir alike.

The music is a combination of modern and traditional, ancient and original, with new songs written by the Praise Singers Director Wade Hampton Miller as part of the mix. Hymnal selections are reinterpreted and arranged to suit the instruments and voices of the group, and mountain gospel "Brush Arbor" singing adds spiritual depth and poignancy as well as a participatory call and response dynamic.

The point of this broad approach is not to be eclectic for its own sake, but to give each service the musical and emotional power it deserves. There is a narrative in the liturgy and the readings every Sunday, and the music needs to underscore and support that. It needs to be uplifting without being smarmy or self-satisfied, and it has to make sense from a musical standpoint. The requirement for our music is for it to be melodic, memorable, and singable.

That's the constant goal of the Praise Singers, and we do our best to achieve it.

Wade Hampton Miller
Director, St. Mary's Praise Singers



Planned Giving Committee

Committee Members

Randal Buckendorf, Chair

Eric Wohlforth

Hugh Gellert

Bill Toney (resigned 2011 due to relocation)

Mike Morrison

Jeff Tyson

Duane Heyman

Planned Giving Committee

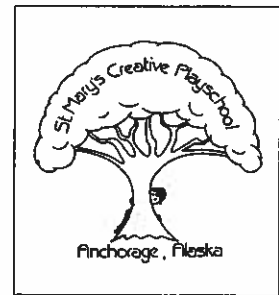
The Planned Giving Committee manages St. Mary's Planned Giving Program. The Planned Giving Program was created in 1999 to create a process for *inter vivos* gifts, testamentary bequests, and other transfers by church members to the church to meet the goals of the church mission and of the individual members financial planning and estate planning objectives. The Committee oversees the day to day operations of the planned giving fund and also manages three sub accounts: the St. Mary's Playschool Account, the Huffman Children's Education Fund; and new for 2011 the Caroline Penniman Wohlforth Memorial Fund. The Committee is composed of seven members.

The funds in all four accounts are actively managed by the Committee with the investment advice of Sandar & Sandar Financial Strategies Group of Wells Fargo Advisors. The Committee meets quarterly at 5:30 p.m. on the second Wednesday of February, May, August, and November. The Committee manages the four accounts in a similar manner in a moderately conservative fashion that seeks to maximize yearly distributions yet conserve the core of each account for future distributions. The current allocation is approximately 5% cash; 35% fixed income; and 60% equity positions.

Each fall the Committee votes on the yearly distribution of income from the funds. The goal is to distribute 5% each year based on the September 30th balances of the account. The distribution for 2012 from the primary account is \$49,208.47. The distribution of this amount is set out in the Planned Giving Program fund documents: one half goes to the Operating budget and one quarter each goes to Capital Improvements/Maintenance and Community Outreach. In addition, \$3,391.20 will be distributed to the Play School, \$1,290.86 will be distributed for use from the Huffman Children's Education Account, and an as yet to be agreed amount from the Wohlforth account due to its first year in existence.

Randal G. Buckendorf ☞

St. Mary's Creative Playschool



SMCP continues to provide an enrichment program for families with children 3, 4 and 5 years old. Our school consists of 6 different classes. The program has classes meeting either 2 or 3 days a week. There are morning and afternoon classes.

The playschool has been a part of the Anchorage community since the 1960's. We are seeing children of parents that attended our playschool. It is great to hear the stories of their adventures at SMCP.

Staffing consists of six very dedicated teachers, Jackie Sparrow, Tennis Mackie, Stuart Beard, Raissa D'Antonia, Veronica Pope and Michelle Atkinson. We offer a "Lunch Bunch" two days a week. Parents are able to extend their child's time at SMCP by an hour. The "Lunch Bunch" times are staffed by a parent volunteer and Kim Conlon.

Kim also continues to facilitate the "Creative Critters Playgroup" on Wednesdays. This is a parent/child playgroup.

The office staff includes Faaleu Faunina, office assistant and Miranda Mundell, director.

The Parent Advisory Council provides support for the playschool through fundraising and encouragement of the school's philosophy.
Playschool Motto.....

"Take chances – Make Mistakes – Be Messy"

Miranda Mundell
SMCP Director ☞

List of teachers and staff:

Rassia D' Antonio - 4 yr. old Teacher
Jackie Sparrow - 4 yr. old Teacher
Michelle Atkinson - 4 yr. old Teacher
Tennie Mackie - 4 yr. old Teacher
Veronica Pope - 3 yr. old & 3/4 yr. old Teacher
Stuart Beard - 3 yr. old Teacher
Faaleu Faumuina - Office Assistant
Miranda Mundell - Director

Playschool



Thursday Morning Men's Group

Thursday Morning Men's Group

Starting at 7:00 am on Thursday mornings, a group of men gathers in Waldron Hall for about an hour before work, for fellowship and to study God's word. Over coffee and a light breakfast, we talk about our experiences and how they relate to the scripture we are reading.

We take turns leading the group through scripture by asking some probing questions that are provided in our book. Each man's style in leadership brings out the scripture in a different way - sometimes directed, sometimes far afield. In the end we always come away with new insights into the word of God and what it means for each of us. We have found that ideas as seen through the lens of someone else's experience can make a vivid impression, a picture from a different vantage point.

We invite any man who wishes to spend an hour a week with us in fellowship studying God's word, to join us for breakfast. We think you, like we have, will find this time to be an indispensable part of your week during which you will come to understand God's word with your friends. ☩

Ushering

Over twenty-four ushers covered nearly 100 services throughout the year. When special events, funerals, etc... require ushers, they cover these events also.

Liz Rockwell does the overall coordination/scheduling of ushers as well as recruiting/ scheduling/ training of ushers for the 9:00 a.m. service. Betty Newman handles the duties of head usher, recruiting/ scheduling/ training, for the 11:30 a.m. service. Liz compiles the schedules for both and sends them out on a bi-monthly basis.

Due to the loss of ushers over the year both services are in need of fresh faces. We use the Time & Talent sheets as a source, however, this method does not garner many new people. Help is needed in this area.

It has been rewarding working with so many dedicated people in St. Mary's community. Both Betty and I look forward to continuing in this ministry.

Respectfully submitted,

Liz Rockwell, Usher Coordinator